

Data Model – Getting Started
Oracle Banking Corporate Lending
Release 14.5.0.0.0
[May] [2021]



Contents

1. PREFACE	3
1.1 AUDIENCE	3
2. INTRODUCTION	4
2.1 WHAT IS IN THIS GUIDE.....	4
2.2 WHY REVERSE ENGINEERING.....	4
3. FLEXCUBE UBS DATA MODEL – GETTING STARTED	5
3.1 FLEXCUBE UBS DATA MODEL SCHEMA.....	5
3.2 ORACLE SQL DEVELOPER DATA MODELER.....	5
4. CREATING DATA MODEL AND ER DIAGRAM	6

1. Preface

Oracle FLEXCUBE Universal Banking Software – Data model – Getting started document describes the method to create data model for application business extensibility purpose.

1.1 Audience

This guide is intended for FLEXCUBE Application developers who need to understand the FLEXCUBE UBS data model

2. Introduction

2.1 What is in this guide

This document describes the reverse engineering methodology to get the FLEXCUBE UBS data model for a given business purpose. A given business purpose could vary from report generation to data extraction to extending FLEXCUBE application functionality.

2.2 Why reverse engineering

As the complete ER diagram of FLEXCUBE UBS application would be huge, the business application developers need to re-engineer with required filtered portion of FLEXCUBE UBS to get specific portion of data model.

Example:

There is a business requirement to add additional fields to customer personal information. The business developer could filter the Customer specific entities from FLEXCUBE UBS Database schema and generate the ER diagram. This ER diagram further can be used to understand the FLEXCUBE UBS and can be foundation for further business development requirement.

3. FLEXCUBE UBS Data Model – Getting Started

3.1 FLEXCUBE UBS Data model schema

1. Follow the below steps to get the Oracle FLEXCUBE UBS Data model schema.
 - Identify the new Oracle Database schema for data model purpose.
 - Create the FLEXCUBE UBS database tables by running all the DDL scripts in below folder at the schema identified.
 - FCUBS_12.2.0.0\MAIN\DATABASE\HOST\CONSOL\DDL\TABLE
 - FCUBS_12.2.0.0\MAIN\DATABASE\BRANCH\CONSOL\DDL\TABLE
 - FCUBS_12.2.0.0\MAIN\DATABASE\EL\CONSOL\DDL\TABLE
 - Create Foreign Keys in schema using following scripts at the schema identified.
 - FCUBS_12.2.0.0\MAIN\DATABASE\DATAMODEL\FKR
 - Create column comments using below scripts at the schema identified.
 - FCUBS_12.2.0.0\MAIN\DATABASE\DATAMODEL\CMT

Note: The Database environment used for this data model cannot be used for other testing/production purpose.

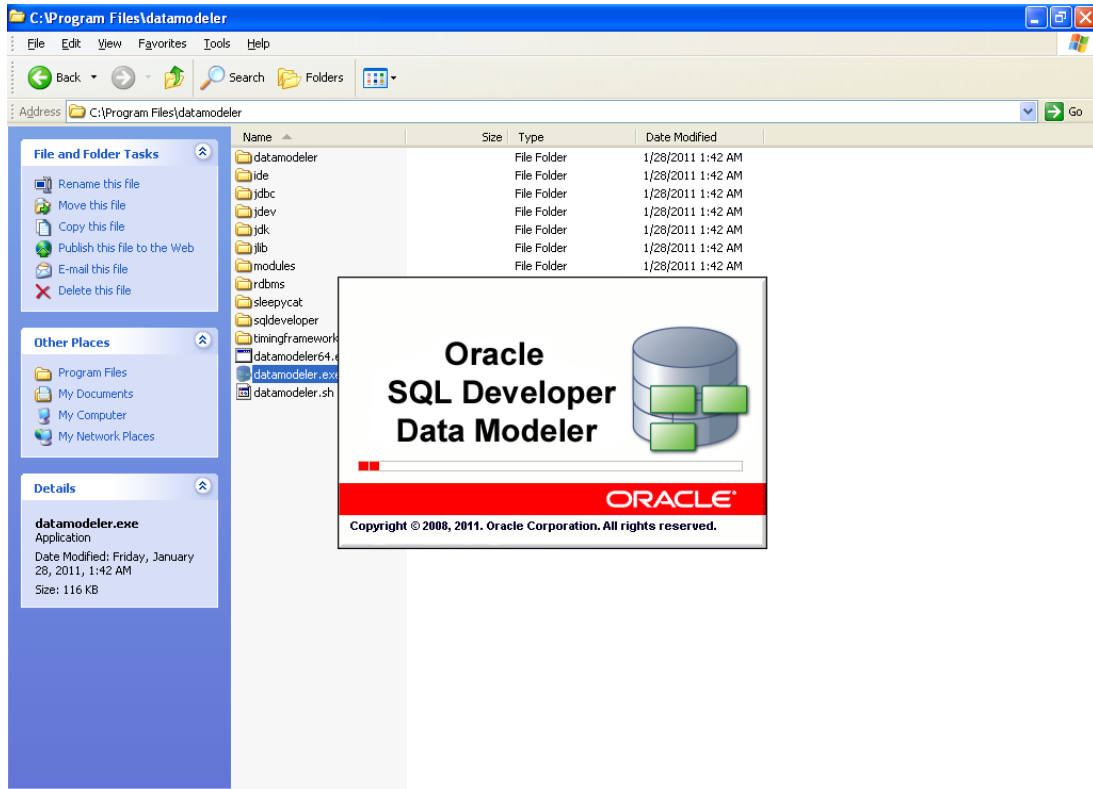
3.2 Oracle SQL Developer Data Modeler

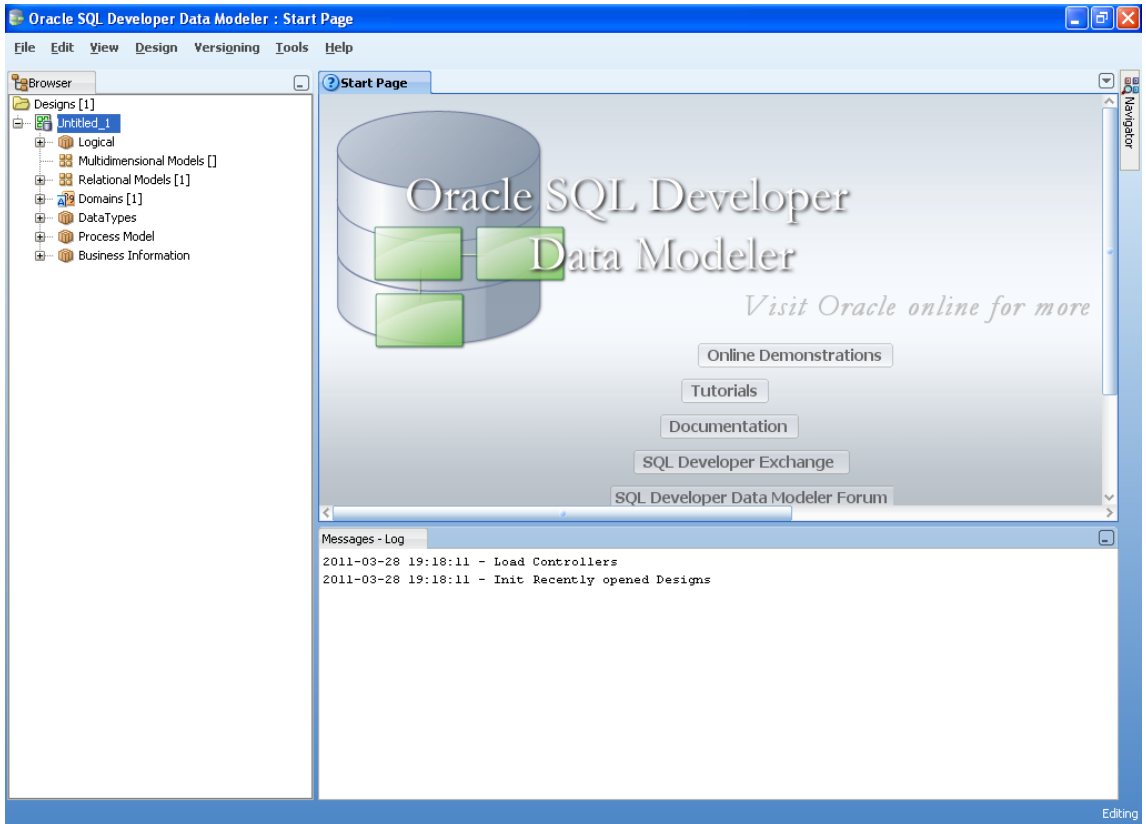
Ensure you have installed the Oracle SQL Developer Data model in your local system. Refer further Oracle documentation for download and install instructions.

<http://www.oracle.com/technetwork/developer-tools/datamodeler/downloads/index.html>

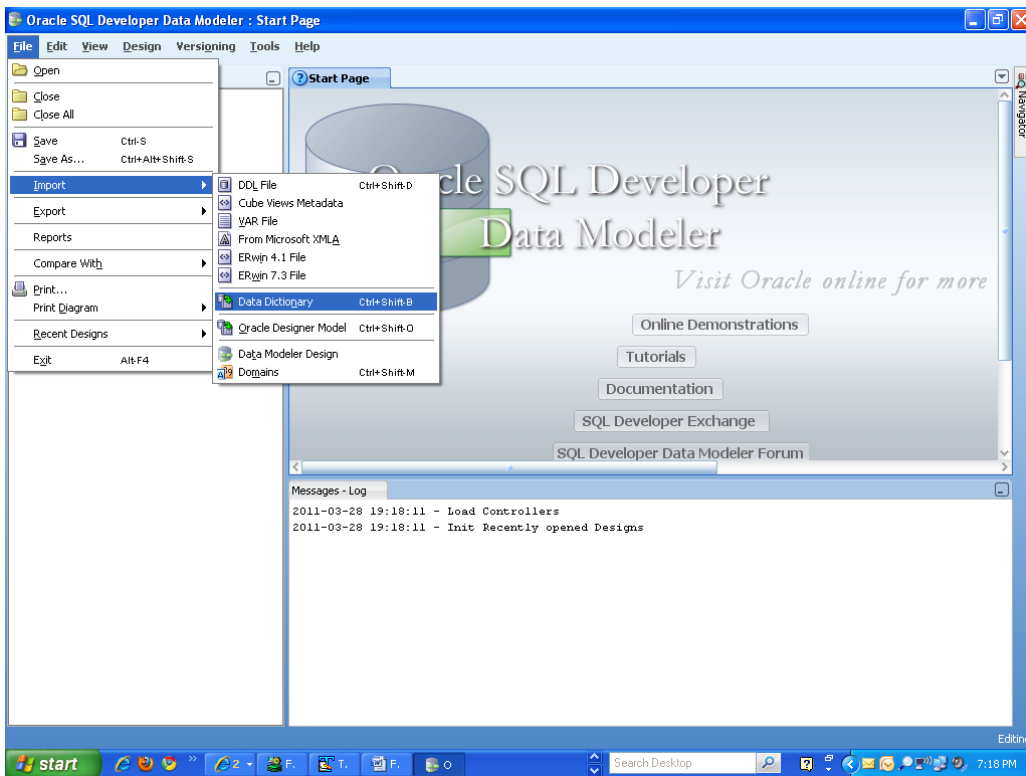
4. Creating Data Model and ER Diagram

1. Open the Oracle SQL Developer Data modeler

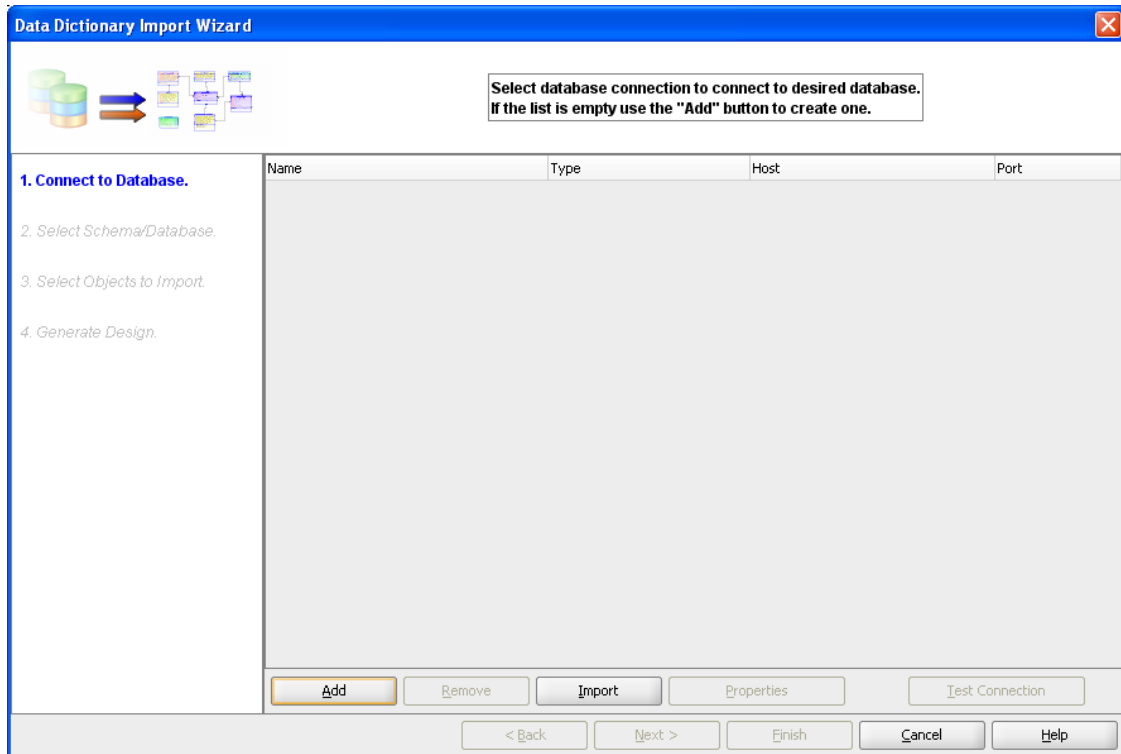




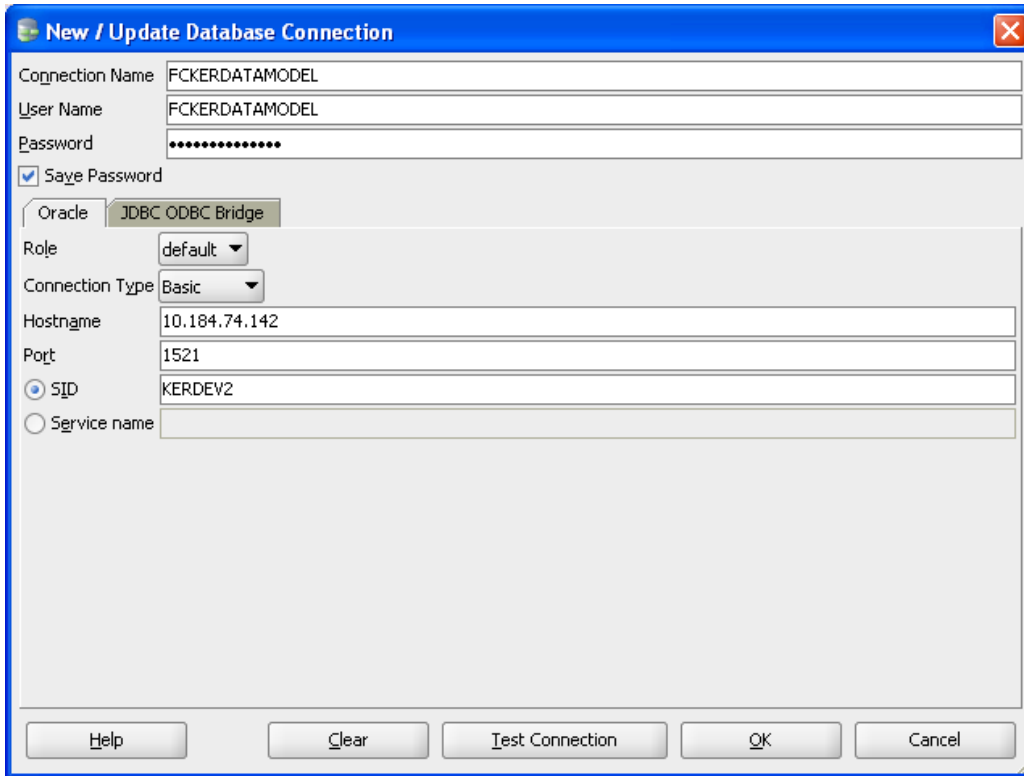
2. Click File → Import → Data dictionary



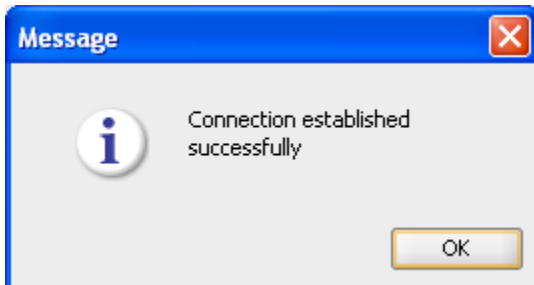
3. Click **Add**



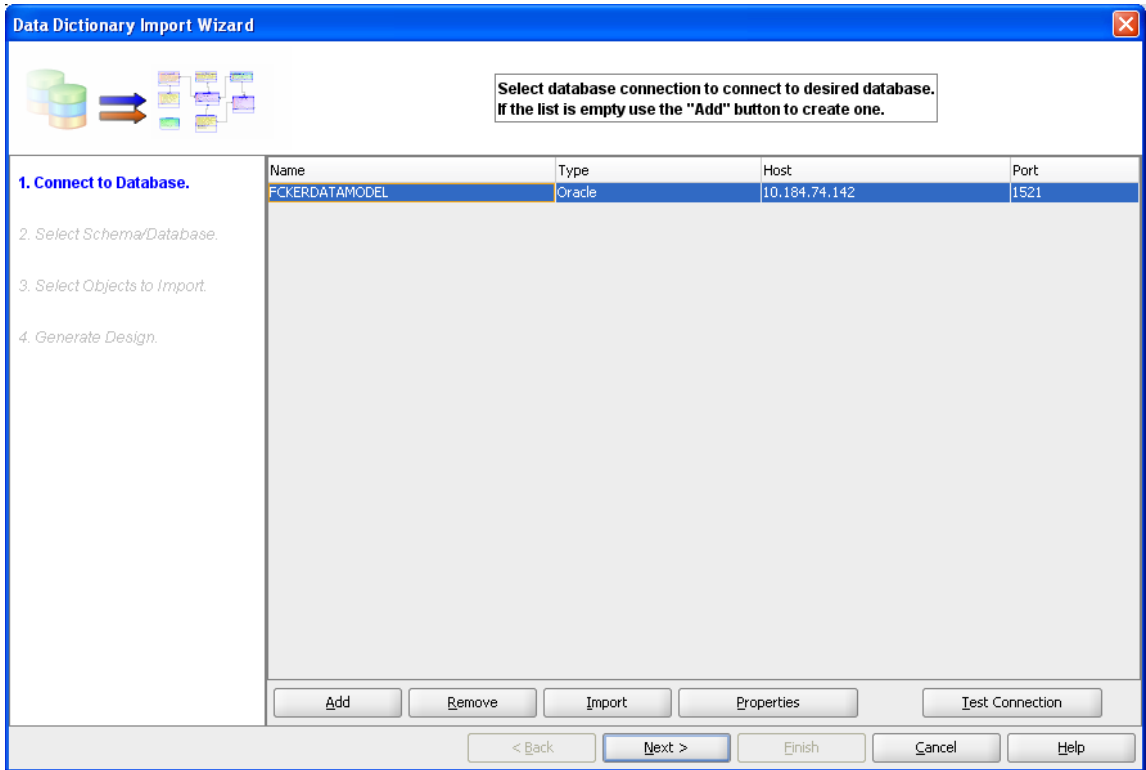
4. Provide the **database connectivity** parameters



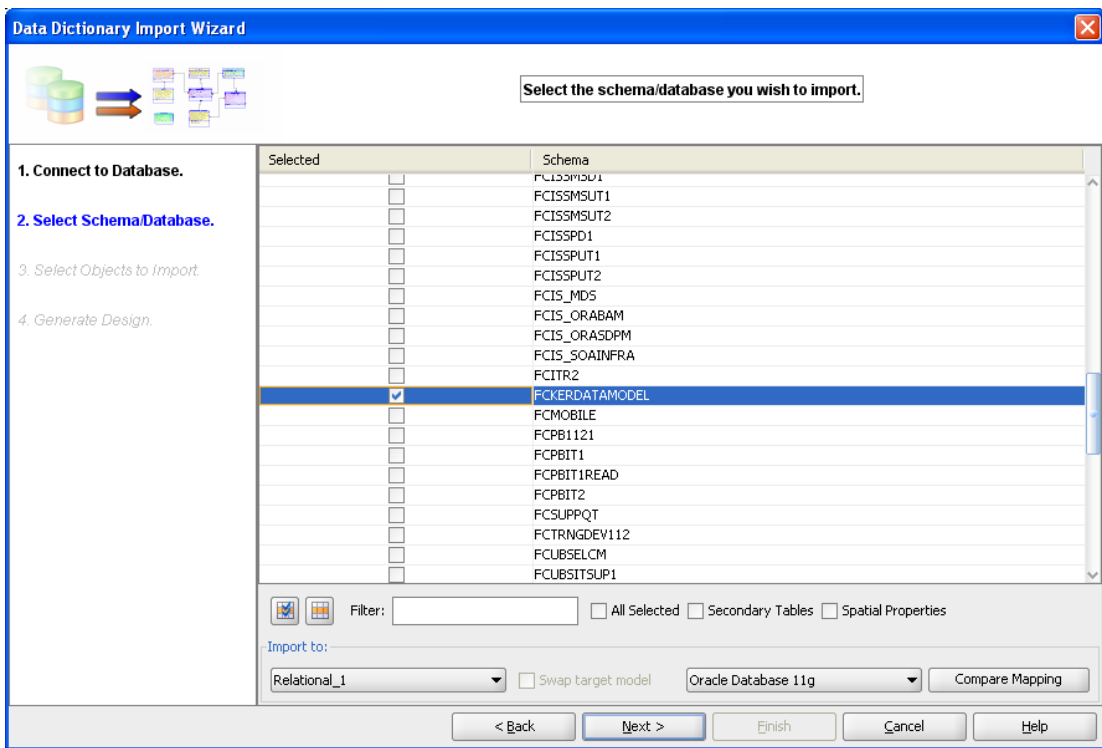
5. Click **Test Connection** and ensure it is successful. If connection fails, verify and repeat step 4



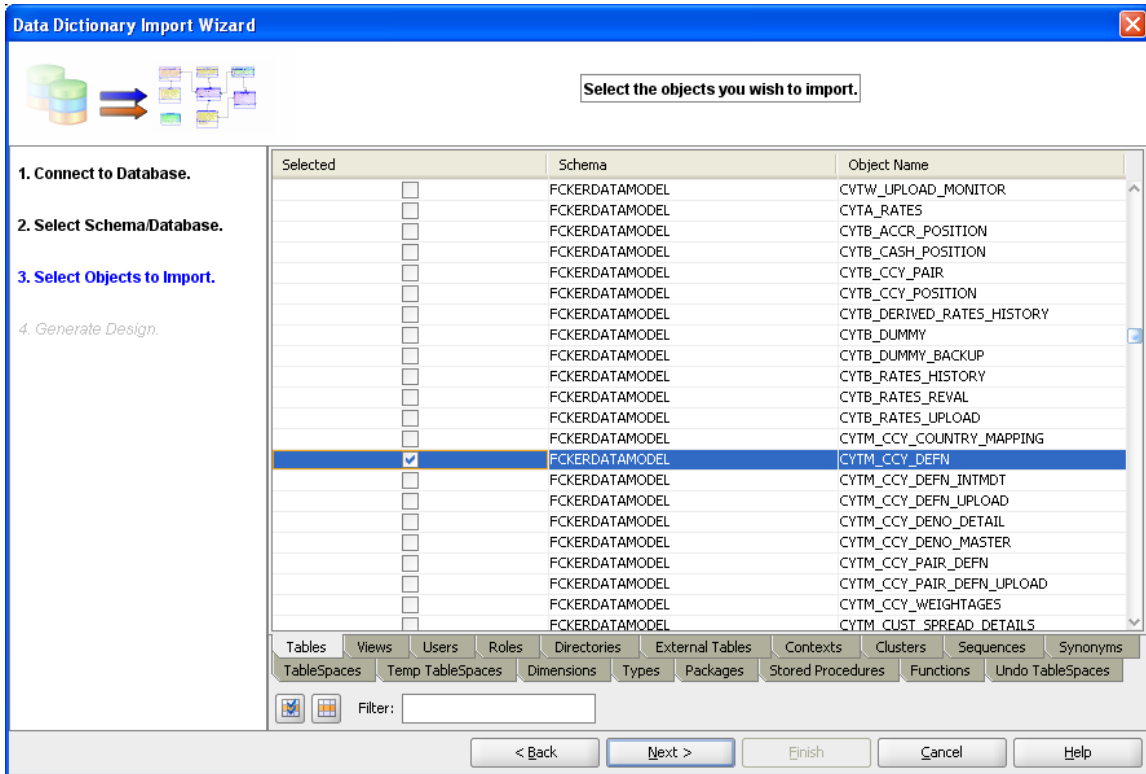
6. Click database connection row

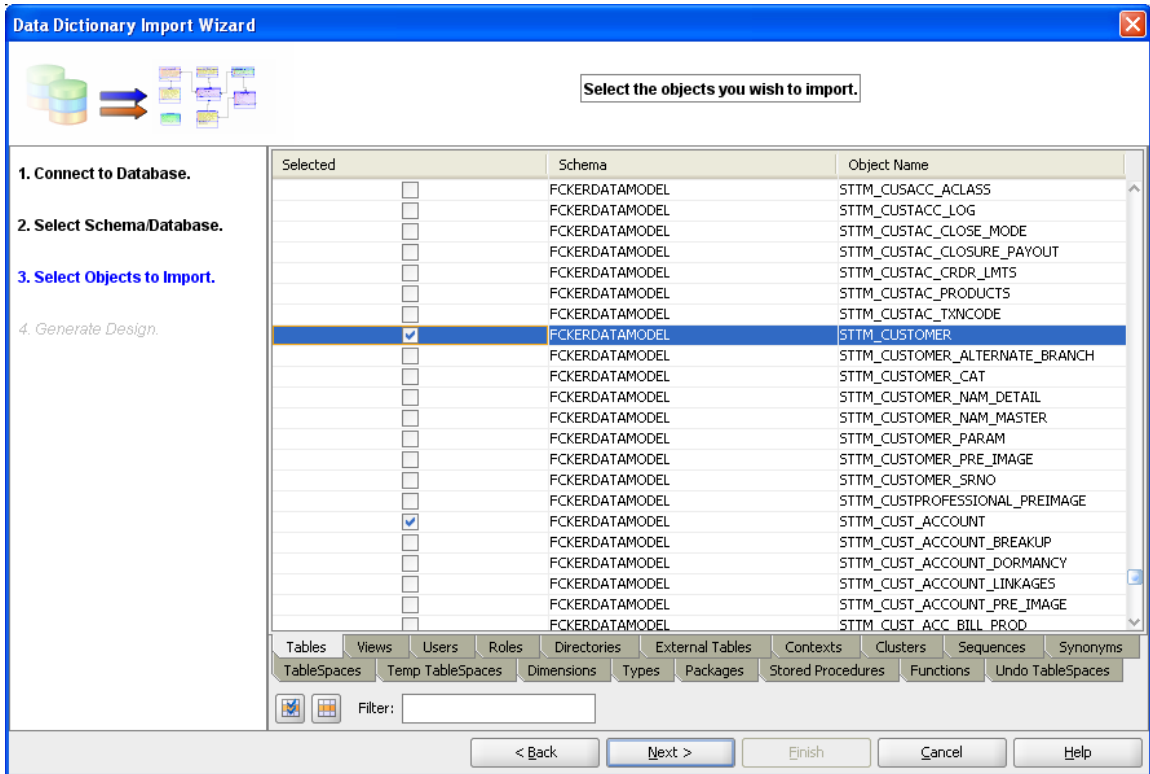


7. Select the database Schema name

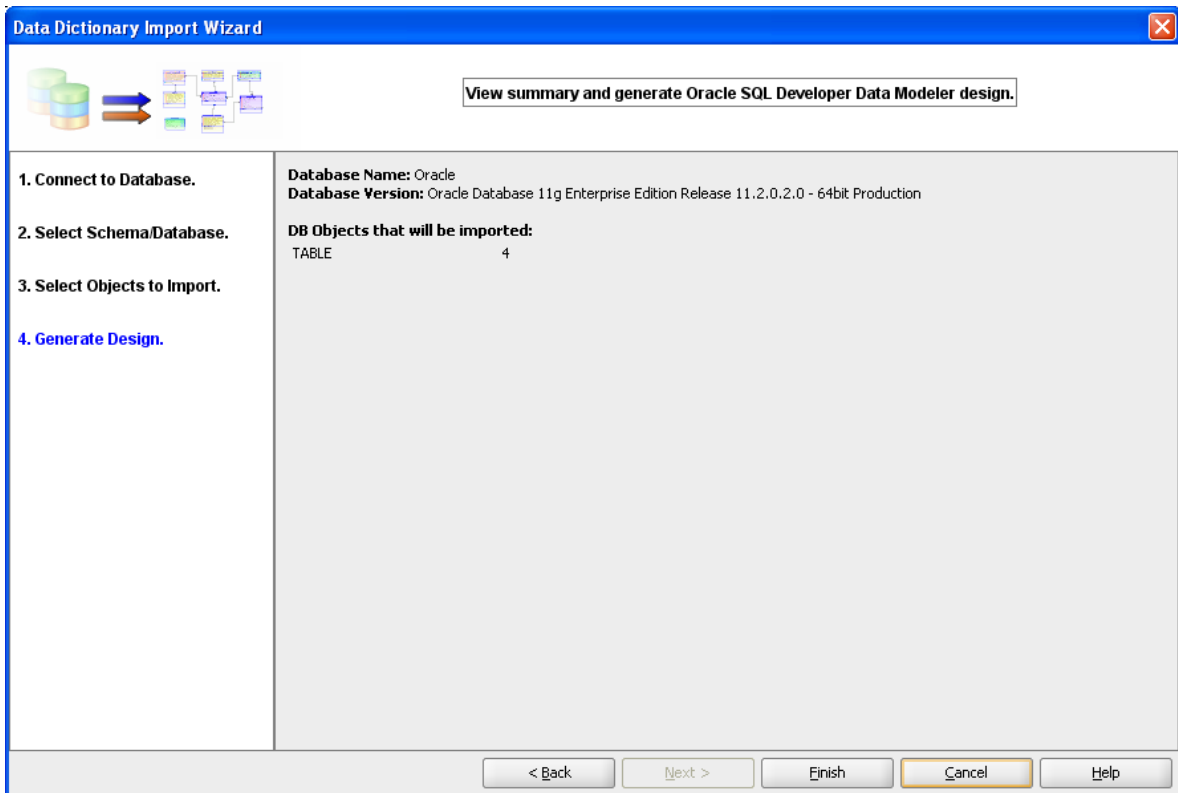


8. Select the entities(tables) that are to be used in ER diagram

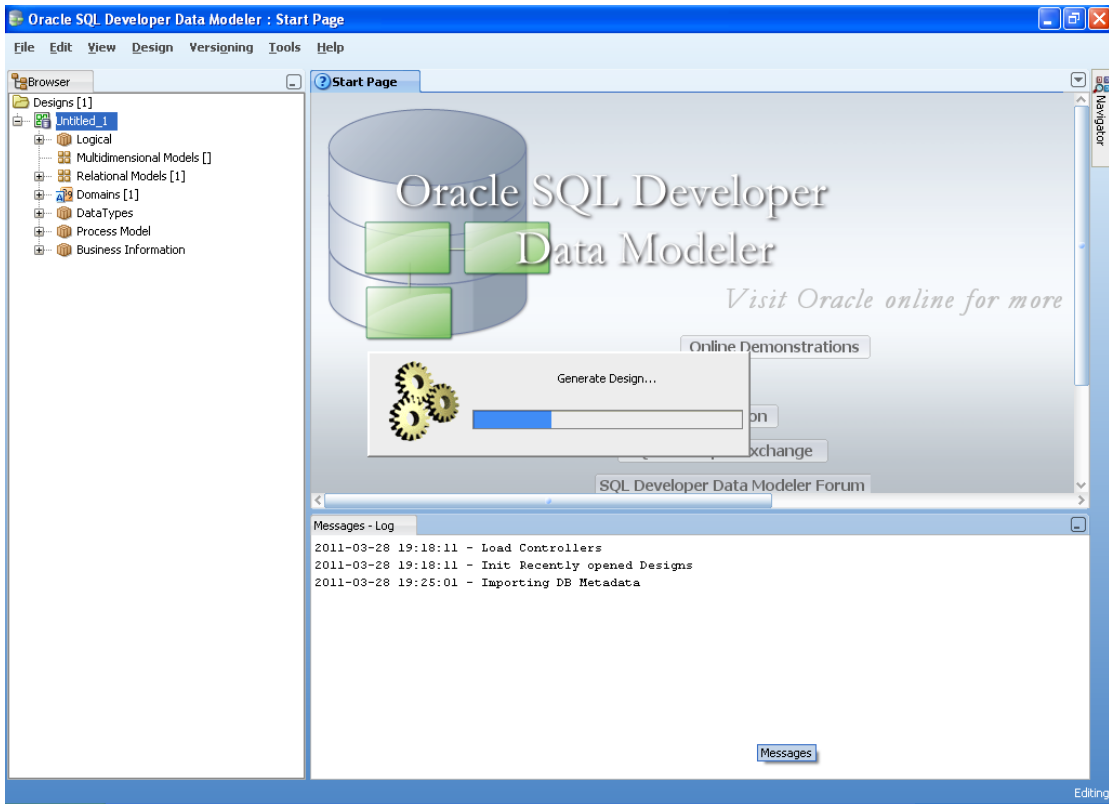


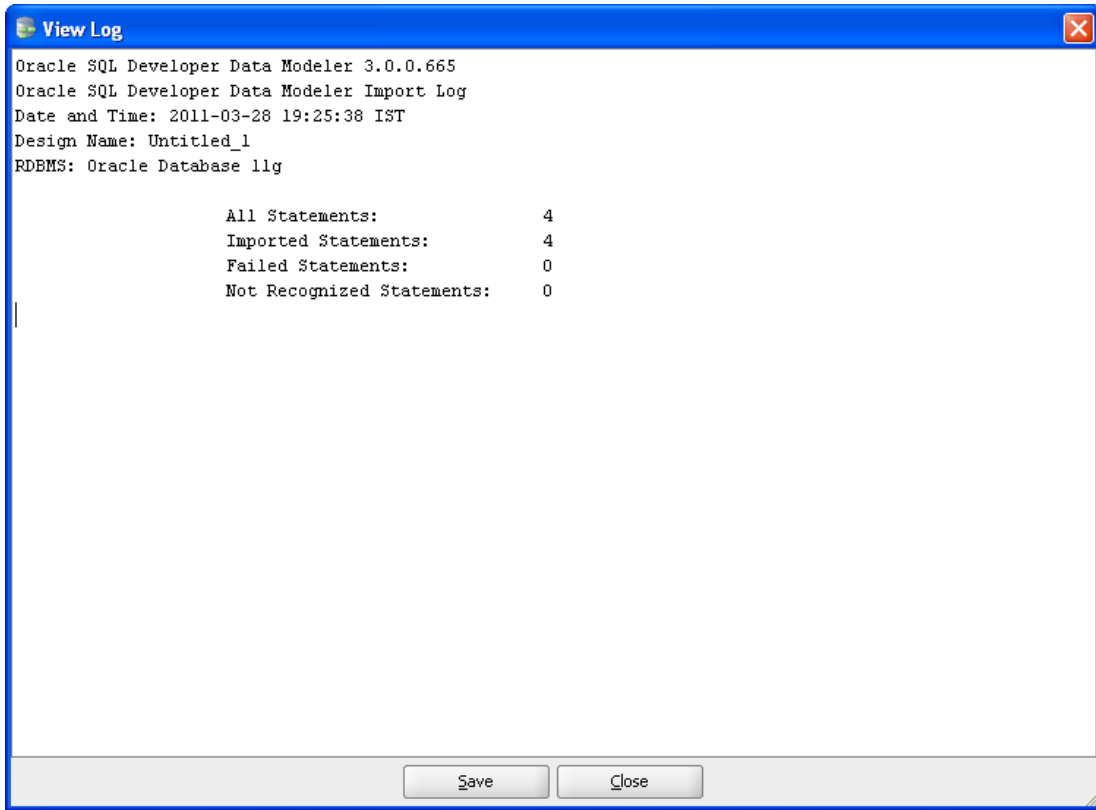


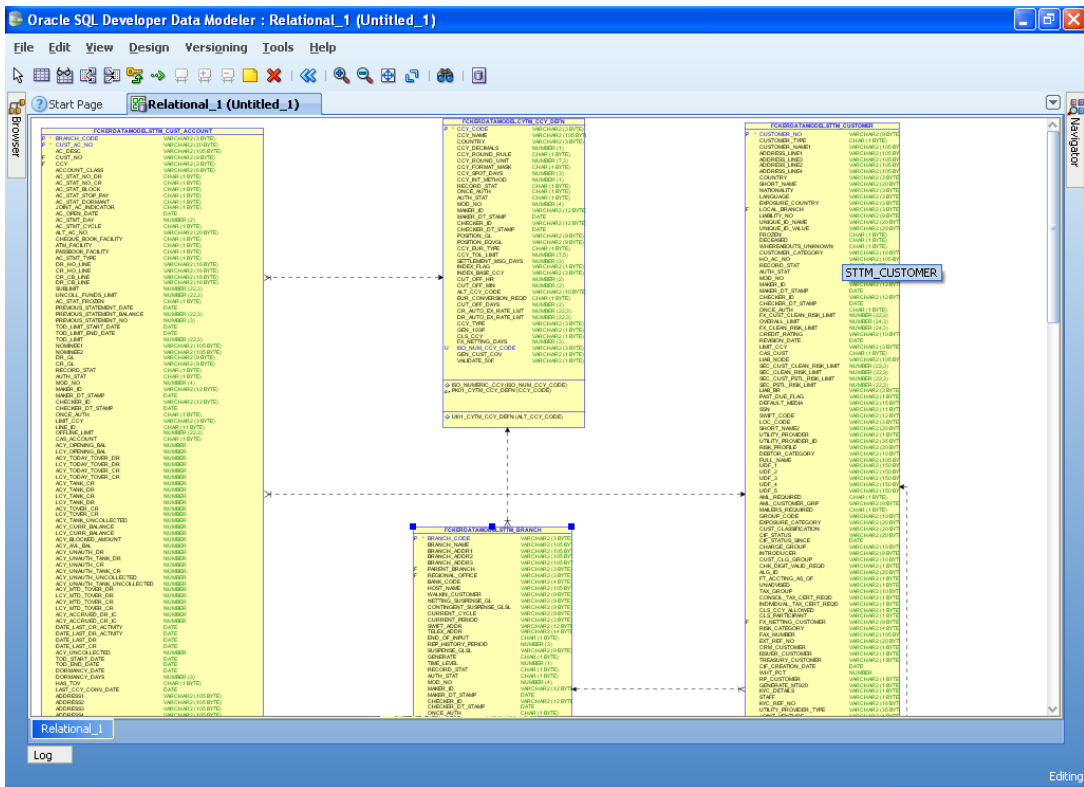
9. Click Next



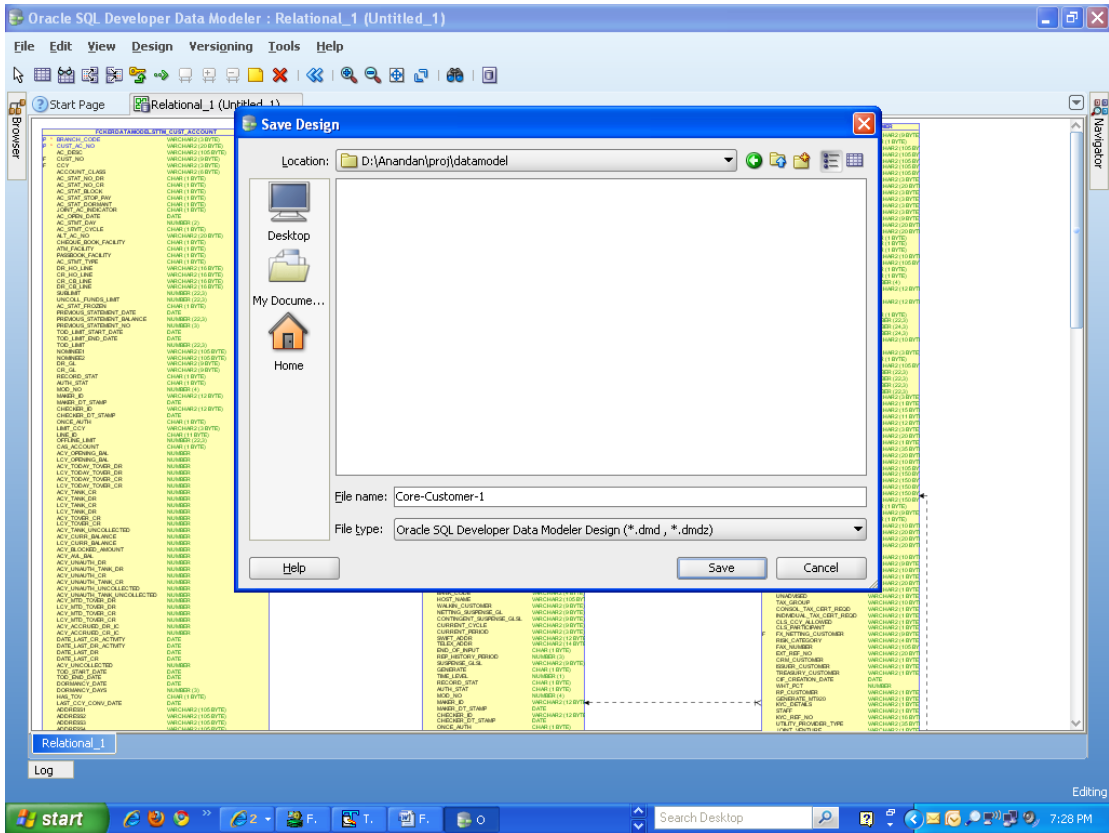
10. Click **Finish**

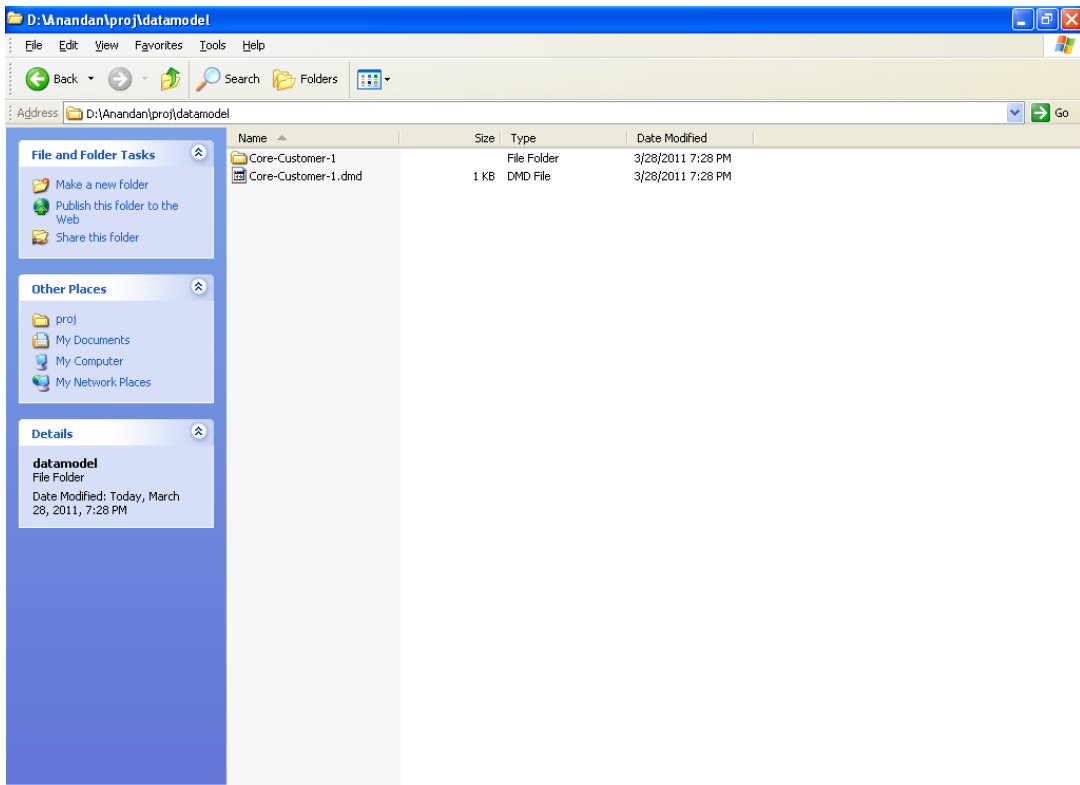
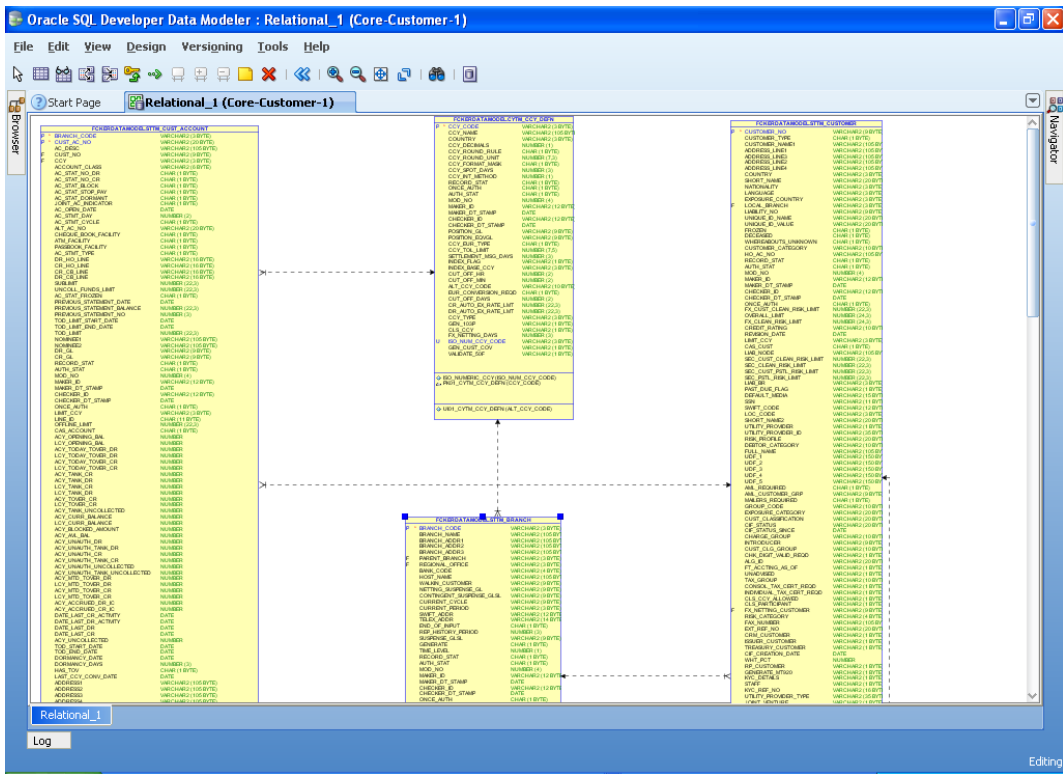






11. Save data model generated







Data Model Getting Started
[Dec] [2018]
Version 14.2.0.0.0

Oracle Financial Services Software Limited
Oracle Park
Off Western Express Highway
Goregaon (East)
Mumbai, Maharashtra 400 063
India

Worldwide Inquiries:
Phone: +91 22 6718 3000
Fax:+91 22 6718 3001
<https://www.oracle.com/industries/financial-services/index.html>

Copyright © [2007], [2018], Oracle and/or its affiliates. All rights reserved.

Oracle and Java are registered trademarks of Oracle and/or its affiliates. Other names may be trademarks of their respective owners.

U.S. GOVERNMENT END USERS: Oracle programs, including any operating system, integrated software, any programs installed on the hardware, and/or documentation, delivered to U.S. Government end users are "commercial computer software" pursuant to the applicable Federal Acquisition Regulation and agency-specific supplemental regulations. As such, use, duplication, disclosure, modification, and adaptation of the programs, including any operating system, integrated software, any programs installed on the hardware, and/or documentation, shall be subject to license terms and license restrictions applicable to the programs. No other rights are granted to the U.S. Government.

This software or hardware is developed for general use in a variety of information management applications. It is not developed or intended for use in any inherently dangerous applications, including applications that may create a risk of personal injury. If you use this software or hardware in dangerous applications, then you shall be responsible to take all appropriate failsafe, backup, redundancy, and other measures to ensure its safe use. Oracle Corporation and its affiliates disclaim any liability for any damages caused by use of this software or hardware in dangerous applications.

This software and related documentation are provided under a license agreement containing restrictions on use and disclosure and are protected by intellectual property laws. Except as expressly permitted in your license agreement or allowed by law, you may not use, copy, reproduce, translate, broadcast, modify, license, transmit, distribute, exhibit, perform, publish or display any part, in any form, or by any means. Reverse engineering, disassembly, or decompilation of this software, unless required by law for interoperability, is prohibited.

The information contained herein is subject to change without notice and is not warranted to be error-free. If you find any errors, please report them to us in writing.

This software or hardware and documentation may provide access to or information on content, products and services from third parties. Oracle Corporation and its affiliates are not responsible for and expressly disclaim all warranties of any kind with respect to third-party content, products, and services. Oracle Corporation and its affiliates will not be responsible for any loss, costs, or damages incurred due to your access to or use of third-party content, products, or services.